

Between The Water and the Sky

Relaxed Performance in Peterborough
Square Courtyard

Thursday, Sept. 27th 3:30pm

A Visual Story about the Venue and
Performance





The Electric City Culture Council

Artsweek is grateful to our funders:



Table of Contents

The Venue	1
Accessibility	2
What is a Relaxed Performance?	3
How to get to PTBO Square Courtyard	4
Directions to the PTBO Square Courtyard from the bus terminal	6
Entrances	10
The Washrooms	12
The Stage	14
Seating	15
The Quiet Area	16
The Performance	17
About <i>Between the Water and the Sky</i>	18
The Characters	19
Have feedback?	22

The Venue: Peterborough Square Courtyard



Accessibility

In partnership with the Council for Persons with Disabilities, Artsweek 2018 is proud to strive for greater accessibility in festival programming.

For additional information on the accessibility features of each venue, please see www.artsweekptbo.com or call 249-353-2787.

Peterborough Square Courtyard is a fully accessible venue with washrooms inside the mall and in The Market Hall, outdoor seating in various areas around the courtyard, shaded areas, and a quiet area available in The Market Hall lounge.

Complimentary earplugs are available at the Artsweek Festival Tent.

What is a Relaxed Performance?

Relaxed Performances were initially designed to welcome audience members with autism spectrum disorders, sensory and communication disorders, or learning disabilities.

Other audience members who benefit from Relaxed Performances include parents with toddlers, people with Tourette's syndrome, people who experience anxiety or people who are not comfortable with the conventions of a traditional performance setting or event.

We are happy to be featuring *Between the Water and the Sky* as a Relaxed Performance.

How to get to PTBO Square Courtyard

Using Handi-Van

The Handi-Van is a transit service for people who are underserved by buses. The Handi-Vans are fully wheelchair accessible. The service is provided door to door on an appointment basis. You must be registered as a Handi-Van user before you make a booking.

Call 705-745-5801 to book or cancel a trip. Trips may be booked up to two weeks in advance. Same day requests may be accommodated if space is available.

Ask to be dropped off at North West corner of Water Street and Charlotte Street.

Taking Public Transit

The City Bus Terminal is located on Simcoe Street. From there, you can get to the Peterborough Square Courtyard by going east on Simcoe Street towards George Street. Turn right on George Street, and proceed down George Street until you reach Charlotte Street. Turn left on Charlotte Street. Proceed about 20 metres. You will see the courtyard with a ramp to the left and various entrances up concrete steps around the vicinity. Refer to the next section of the document to take you through the directions.

Driving

In addition to street parking there are two parking lots near the Peterborough Square Courtyard. One is the Charlotte Mews. Parking costs \$1 per hour, and you must pay in cash to park here. Access to the Charlotte Mews is from Simcoe Street between George Street and Aylmer Street. The Charlotte Mews is on the South side of the street. You can get to the Peterborough Square Courtyard by going East on Simcoe Street towards George Street. Turn right on George Street, and proceed down George Street until you reach Charlotte Street. Turn left on Charlotte Street. Proceed about 20 meters and you will see the courtyard.

In addition, there is underground parking for Peterborough Square and Galaxy Cinemas the same distance as Charlotte Mews. The first hour is free and \$1.50 for every other hour. The entrance is located at the bottom of Charlotte Street to the left across from Millennium Park. There is an elevator system that you can use from the underground parking to arrive on the top level of Peterborough Square to attend the show.

Directions to PTBO Square Courtyard from the Bus Terminal

#1. When you walk out of the bus terminal turn left and start walking down Simcoe Street towards George Street, one block.



Note: There are accessible crossing signals at George and Simcoe. By pushing in and holding the yellow button, an audible crossing signal can be activated

#2. Once you get to George Street, cross the road and turn right.



#3. Cross the road again and walk straight down George Street.



#4. Keep walking straight one block until you get to Charlotte Street.



#5. Walk straight.



#6. Once you get to Charlotte Street, turn left.



#7. Turn left around The Market Hall (big red brick building).



#8. Once you've turned the corner, you've arrived at the PTBO Square Courtyard. There is an accessible entrance on the left (pictured).

Entrances



This is one of the entrances with stairs on Charlotte Street.



This is another entrance with stairs on Water Street.



This is a second accessible entrance on Water Street.



There is an accessible entrance to PTBO Square Mall past The Market Hall entrance and to the left of the first accessible courtyard entrance pictured on page 9.

The Washrooms



There are washrooms located on the second floor of The Market Hall, off of the lobby.

There are three washrooms. The one on the left is a private wheelchair accessible washroom. The middle restroom has stalls. The washroom on the right has urinals and one stall. You can use any of the washrooms during the performance, there is no women's or men's room.



There are additional, accessible washrooms inside PTBO Square Mall. When inside, walk past McDonalds away from the stage and the washrooms are around the corner from Simply of Thai. There are men's, women's and a wheelchair accessible washroom available.

The Stage



The musical aspects of the performance will happen on the wooden stage off to the left of the dancing statues on the grassy area.



The dancing will happen on the grassy area in the middle of the courtyard.

Seating

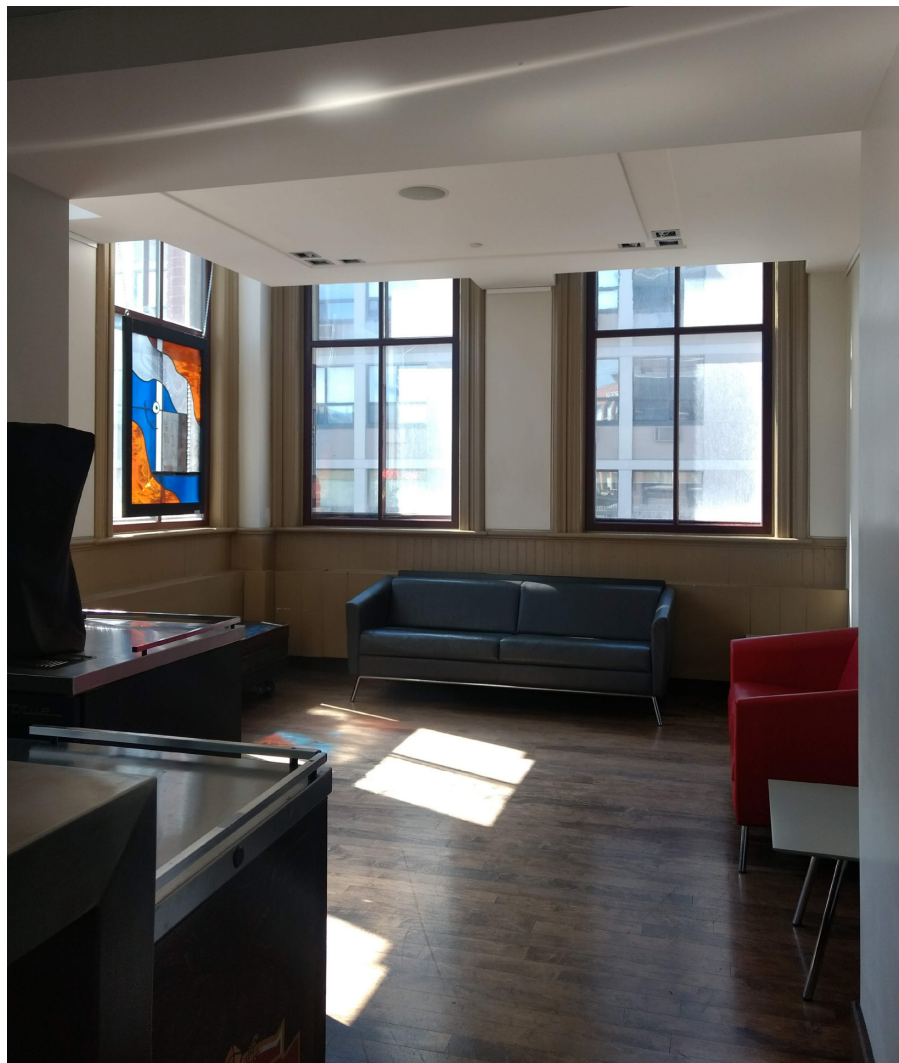


There is various seating available on the upper ledge of the courtyard and also directly in front of the stage. Seating accommodations (i.e. chairs, stools, tables) is available.



There is also seating along the various concrete ledges.

The Quiet Area



If the noise and people begin to be too much for you, there is a designated quiet area where you can go to get away from the crowd.

The Quiet Area is found on the second floor of The Market Hall off of the lobby, past the washrooms, to the right of the bar.

The Performance: *Between the Water and the Sky*



About *Between the Water and the Sky*

Lead Artist: Joeann Argue

Participating Artists:

Unity: Joeann Argue, Brenda Maracle-O'Toole, Barb Rivett, and Heather Shpuniarsky

Dancers/Choreographers: Beany John and Jade Willoughby

Peterborough Symphony Orchestra String Quartet: Sona Kaltagian, Zuzanna Chomicka-Newnham, Elizabeth Morris, and Phoebe Tsang

Description:

Between the Water and the Sky is a live performance featuring Unity Indigenous vocal ensemble, Peterborough Symphony Orchestra String Quartet, and dancers/choreographers Beany John and Jade Willoughby. A dynamic collaboration between art forms, *Between the Water and the Sky* features original songs, "The Medicine Song" and "Ghost Dancer," by Unity, musical composition by Christine Donkin, and an embodied performance by Beany and Jade. It explores Jade's journey to reclaim Anishinaabemowin, her linguistic and cultural heritage. *Between the Water and the Sky* is presented by Artsweek 2018 in partnership with Unity, Peterborough Symphony Orchestra, and Public Energy Performing Arts.

Length: 10 minutes

The Characters



Pictured are the main performers, Beany John and Jade Willoughby. What you see are the outfits and makeup they wear throughout the performance, with the exception of a blanket used as a prop and a pair of wings lit with blue lights (see next page). Beany and Jade do a mix of medium-pace traditional dance and interpretive movement.

Guide to Sounds and Images



Near the end of the performance, Jade is outfitted with blue-lit wings that you see pictured.





The music in the performance is mostly performed by slow, melodic strings and vocals with the occasional medium-paced drumming and episodes of darker tones and high-pitched strings.

Have feedback? We'd love to
hear from you...

You may use this space or email
infoartsweek@gmail.com

THANKS!