

PETERBOROUGH SQUARE VENUE GUIDE



TABLE OF CONTENTS

PUBLIC ENERGY ACCESSIBILITY VISION.....	3
COURTYARD DESCRIPTION.....	3
COURTYARD ACCESSIBILITY.....	4
CITY TRANSIT RIDERS.....	5
ACCESS TO THE PETERBOROUGH SQUARE COURTYARD FROM THE CITY BUS TERMINAL.....	5
ACCESSING THE COURTYARD FROM THE CHARLOTTE MEWS PARKING LOT.....	6
ACCESSING THE COURTYARD FROM WATER STREET.....	6
ACCESSING THE COURTYARD FROM THE PETERBOROUGH SQUARE PARKING GARAGE.....	6
ACCESSING THE COURTYARD FROM THE KING ST. PARKING GARAGE.....	7
SLIDING SCALE TICKET PRICES.....	7
MARKET HALL VOLUNTEERS.....	7
MARKET HALL MAIN ENTRANCE.....	8
PETERBOROUGH SQUARE WASHROOMS.....	9
ELEVATOR.....	10
STAIRS.....	10
MARKET HALL MAIN LOBBY & WASHROOMS.....	11
RELAXED PERFORMANCES.....	12
LAND ACKNOWLEDGMENT.....	12

ACCESSIBILITY GUIDE FOR THE PETERBOROUGH SQUARE COURTYARD

PUBLIC ENERGY ACCESSIBILITY VISION:

Public Energy Performing Arts is committed to removing barriers to those who want to engage with the performing arts: as audiences, artists and administrators. If you have questions about the accessibility of our performances, workshops or digital events, please direct them to:

admin@publicenergy.ca

Beyond our advertised accessibility initiatives, we are happy to make additional accommodations on request.

COURTYARD DESCRIPTION:

The courtyard attached to Peterborough Square is located on the north-west corner of Charlotte St. and Water St. The address is 140 Charlotte St, Peterborough ON. It can be accessed from both streets via accessible ramps or stairs.

There is also access to the courtyard through Peterborough Square. From inside Peterborough Square the doors to the courtyard are between the escalator and the entrance to the Curry Mantra restaurant. The courtyard is used for various events including the Farmer's Market in summer months and various performances hosted by Public Energy and others

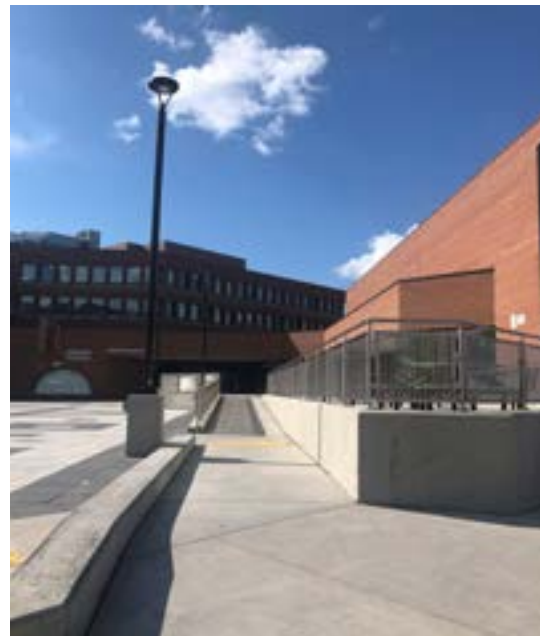
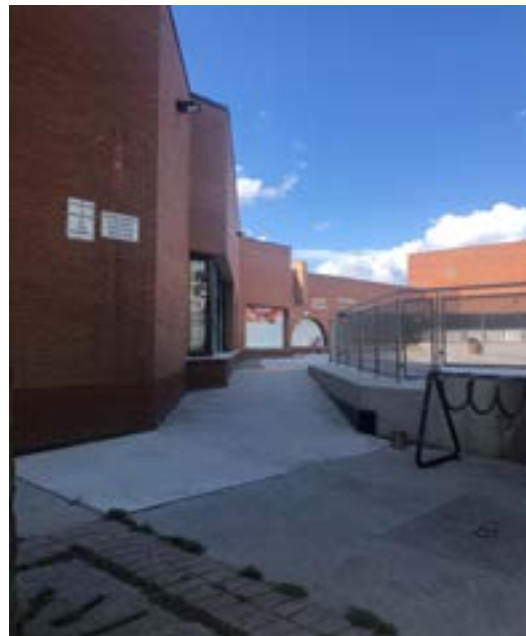


COURTYARD ACCESSIBILITY:

The courtyard is primarily made up of concrete which may create some noise challenges from passing traffic. Individuals with hearing challenges should be aware that traffic noises cannot be controlled during programs.

There are four entry points to the courtyard. Two ramps and two small groups of steps. The ramps are located on the western (via Charlotte Street) and eastern (via Water Street) sides of the courtyard. A group of four steps is located on the southern side of the courtyard and a set of three stairs are located at the south-east corner (Charlotte and Water).

All ramps and stairs have tactile markers at the top and bottom so visitors know when the ramp or stairs will begin.



There is access to Wi-Fi for anyone who requires it. There are no shaded areas, so the courtyard may become warm when the sun is out. There may be some dust and other scents caused by traffic and surrounding businesses.

There is a green space with a tree at the bottom of the western ramp, on Charlotte St. just across from the Market Hall entrance, for the use of service animals. The garbage can is on the left side of the ramp when facing the courtyard and is close to the mall entrance past the Market Hall entrance.

During events, tables and chairs will be set up so visitors have a place to sit. Some events will have volunteers who can assist individuals who need help finding a seat.

Guests should be aware that Peterborough Square is closed on Sundays so there may not be access to the mall and the accessible washroom. During Market Hall and Public Energy events there will be access to accessible washrooms within the Market Hall.

CITY TRANSIT RIDERS:

There are bus stops located on the south-west corner of Charlotte St. and George St. and on the north-east corner of Water St. and Charlotte St. The Peterborough Square Courtyard is also within reasonable walking distance from the Bus Terminal.



Visitors using the Peterborough Accessible Community Transit service can request that they be dropped off beside the west ramp of the Peterborough Square Courtyard on Charlotte St.

The address is 140 Charlotte St., Peterborough ON.

ACCESS TO THE PETERBOROUGH SQUARE COURTYARD FROM THE CITY BUS TERMINAL:

For transit users, visitors to the Peterborough Courtyard can use these directions to find the courtyard.

Pedestrians can leave the terminal located on Simcoe St. from either end of the terminal. Once you have left the terminal turn left [east] on Simcoe St. and walk to the corner of Simcoe St. and George St. This intersection has an audio crossing signal. Cross Simcoe St. heading right, [south], then turn left [east] and cross George St.

Turn right [south] and walk one block and Peterborough Square will be on your left side.

Turn left, [east] on Charlotte St. and walk to the western ramp access for the courtyard on the left side of the sidewalk, just past the Market Hall Entrance.

Be aware that there are four cement posts located near the western ramp access point.

ACCESSING THE COURTYARD FROM THE CHARLOTTE MEWS PARKING LOT:

There is parking available in the Charlotte Mews which can be accessed from Simcoe St.

Pedestrians can travel on Simcoe St. turning right from the parking lot and traveling east to George St. Cross George St. and Turn right [south] and walk one block, and Peterborough Square will be on your left side.

Turn left [east] on Charlotte St. and walk to the western ramp access for the Courtyard on the left side of the sidewalk, just past the Market Hall entrance.

Alternatively, pedestrians can exit the Charlotte Mews parking lot through the pass through to Charlotte St. across from the Social Services building and turn left [east].

Walk east to the corner of Charlotte St. and George St. Cross George St. and continue walking east on Charlotte St. and walk to the western ramp access for the courtyard on the left side of the sidewalk, just past the Market Hall entrance.

Be aware that there are cement support posts located near the ramp access point.

ACCESSING THE COURTYARD FROM WATER STREET:

The courtyard access from Water St. is on the north-west corner of Water and Charlotte St. The Galaxy Theatre is directly across the street, and the Ministry of Natural Resources [MNR] is diagonally across from the courtyard.

There are both stairs and a ramp available to access the Courtyard from Water St. This is also the closest access point from the parking garage beneath Peterborough Square.

The ramp access from Water St. is also the closest access to the ramp leading into Peterborough Square.

ACCESSING THE COURTYARD FROM THE PETERBOROUGH SQUARE PARKING GARAGE:

The entrance to the underground parking for Peterborough Square is off Charlotte St. east of Water St.

Take the elevator to the lower level of the Peterborough Square then turn left, exit the mall entrance and turn right [west], walk to the corner of Charlotte St. and Water St. and cross Water St. The courtyard is at this corner.

Note, there is a steep up hill for pedestrians to traverse using these directions. Mobility device users may wish to turn right off the elevator, travel through the mall to the main lobby, turn left into the hallway with access to the elevator to the upper levels and walk through the food court to exit into the court yard. The exit is located between the escalator and the Curry Mantra Restaurant.

ACCESSING THE COURTYARD FROM THE KING ST. PARKING GARAGE:

The King St. Parking Garage is located on King St. between Aylmer St. and George St.

Exit the King St. Parking Garage and turn left [east].

Walk to the corner of King St. and George St. and cross George St. Turn left [north] and walk one block to Charlotte St.

Cross Charlotte St. and turn right [east] and continue walking to the western ramp access for the courtyard on the left side of the sidewalk, just past the Market Hall Entrance.

Be aware that there are four cement posts located near the western ramp access point.

SLIDING SCALE TICKET PRICES:

Public Energy Performing Arts offers sliding scale ticket pricing with most shows starting at \$5. This applies to all ages, from students to seniors. We believe that cost should not be a prohibiting factor when accessing the performing arts. Thanks to our sponsors and donors for making this possible.

MARKET HALL VOLUNTEERS:

Public Energy Performing Arts staff and volunteers will be present at the ticket table at the bottom of the west ramp closest to Charlotte St. prior to the show. You can recognize us by our badges, which have the Public Energy logo on them. You can ask us for assistance before, during or after a show.



Photo of a Public Energy staff member wearing a badge

Many Public Energy Staff have participated in the Time in My Shoes program and know how to act as a sighted guide.

MARKET HALL MAIN ENTRANCE:

This is the main entrance. It is located on Charlotte Street, just east of George St. The automatic door opener is to the right of the doors at about shoulder height.



Once you enter through the doors, you will be in the front foyer where you will find the stairs. The elevator is located beyond the stairs.

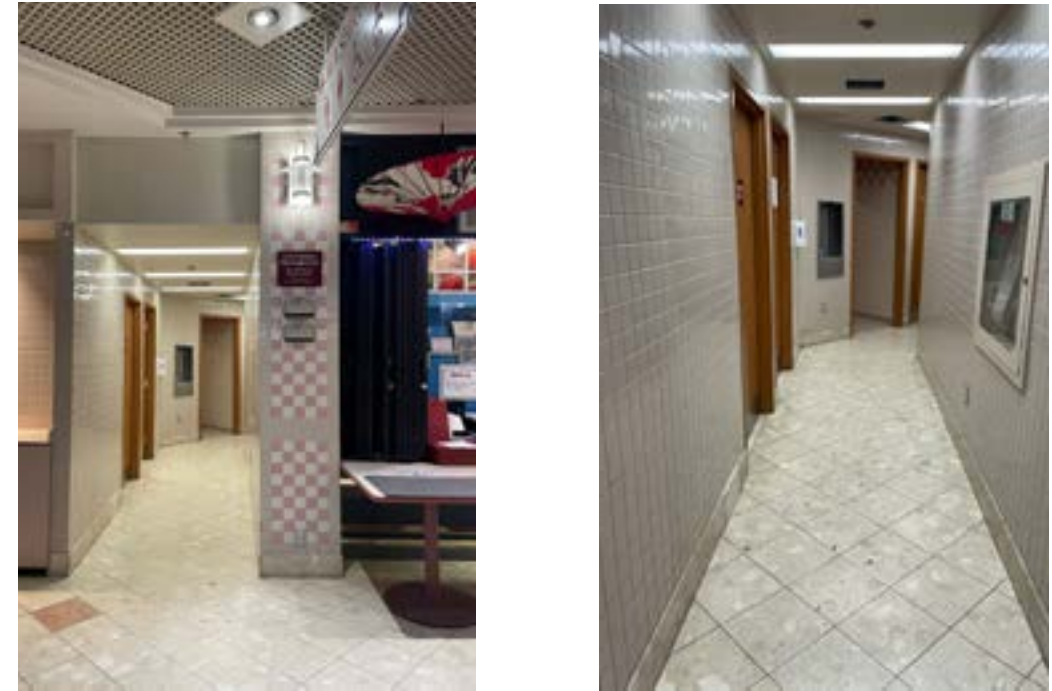
Visitors with service animals will note that there is a small green space just before the ramp leading to the Peterborough Square Courtyard and this is directly across from the Market Hall entrance. There is a garbage can to the right of the Peterborough Square entrance just past the Market Hall entrance.



PETERBOROUGH SQUARE WASHROOMS:

There is one accessible washroom located in Peterborough Square on the main level. During regular hours, visitors to the Peterborough Square courtyard can access the accessible washroom on the main level of the Square by entering the building via the entrance between Curry Mantra and the escalator. Turn right and pass through the food court heading towards the main doors leading out to George St.

The hallway leading to the washroom is on the left side of the Tokyo Sushi restaurant. There are two washrooms marked as Ladies and Gentleman before the visitor arrives at the accessible washroom on the left side of the hallway.



The accessible washroom in Peterborough Square has an automatic door button on the left side of the door, as you enter the sink is to the right of the door, the soap dispenser is above the sink.

The toilet is across from the door against the right wall, there are two grab bars, behind the toilet and one beside it. The paper towel dispenser and garbage are on the left wall beside the toilet. Visitors will have to turn the lock on the door.

ELEVATOR:

The elevator is straight past the stairs when you come in from the ground floor entrance.

The elevator has raised print numbers and symbols as well as braille information on the buttons. The main floor button is marked with an asterisk and the letter "G" for Ground floor. The elevator announces each floor it stops on and warns riders to stand clear of the doors.

The elevator has doors on both sides for entering and exiting. The main floor doors are on the south side of the elevator and the call button is on the right wall. The buttons for the elevator floors are inside these doors on the right side of the wall when you turn around.

The lobby and theatre are located on the second floor. The doors for the second and third floor stops open on the opposite wall from the main floor doors.

When taking the elevator from the second or third floor the elevator is in a small alcove. When a visitor is facing the elevator, the call button is on the left side for both the second and third floors.

There are two sets of open and close door buttons for the front (south) and rear (north) doors. The front door buttons are located above the rear door buttons and are indicated by a solitary line. The rear doors have a double line.



STAIRS:

The stairs lead straight up to the second floor. Once at the very top, turn right and you will see the doors to the lobby.

MARKET HALL MAIN LOBBY & WASHROOMS:

The lobby is located on the second floor. It can be accessed by the stairs and elevator. Three washrooms are located straight ahead, opposite the elevators.

The one on the left is a private wheelchair accessible washroom. The middle restroom has stalls only. The washroom on the right has four urinals and one stall. There is a coat room between the middle and right washrooms. You can use any of the washrooms during Public Energy Performing Arts performances. There is no women's or men's washroom.

The washroom on the left side is wheelchair accessible and the automatic door button is to the left of the door. The accessible washroom contains two grab bars by the toilet, a wall mounted sink and tilted toilet, and a baby change station. To lock this washroom, press the smaller red button on the wall (located on the wall to the left closest to the door as you approach the toilet). The larger button closer to the toilet is the automatic door button. The sink is immediately to the right of the door as you enter and the soap dispenser is to the left of the sink on the wall. The paper towel/garbage is behind the door when it closes.



The right washroom is not wheelchair accessible. Turn right then left through the entrance. This washroom contains a row of four urinals with one stall to the far left. There are two sets of sinks, when facing the urinals. One to the right, and two to the left. There is an automatic soap dispenser mounted on the wall to the left when facing the single sink. The paper towels and garbage is below the dispenser.

The double sink has a built in dispenser and garbage can in the counter. The soap dispenser is mounted to the left side of the wall.

The middle washroom is not wheelchair accessible. Turn left then right through the entrance. This washroom contains a row of stalls only. The stalls are on the left side as you enter. A row of five sinks are located directly across from the stalls. There are automatic soap dispensers on either ends of the sinks (far left and far right). Paper towels holders and garbages are built into the counter between each set of sinks (four in total)

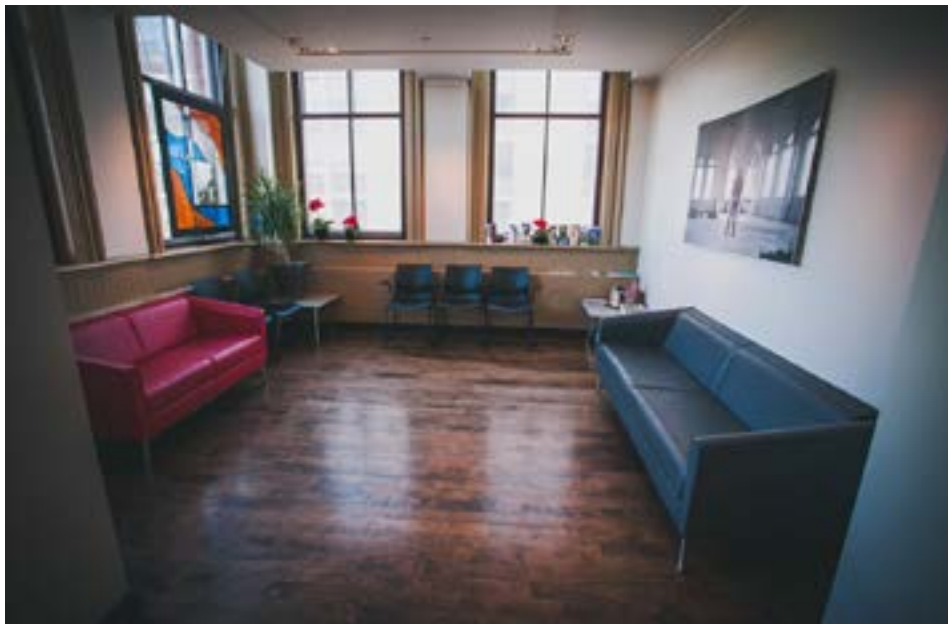
RELAXED PERFORMANCES:

Relaxed performances make theatre spaces more comfortable and welcoming to audience members with autism spectrum disorders, sensory and communication disorders or learning disabilities.

These performances will include a visual story guide for visitors to help them prepare for the show. This guide walks a visitor through all aspects of a relaxed performance from start to finish.

During Public Energy performances, a sensory kit will be available for guests, this kit includes sunglasses or a visor, a stress ball, ear plugs, a fidget spinner, and may contain a venue map. We ask that the items be returned at the end of the performance, you can keep the ear plugs, all other items will be sanitized and reused at future relaxed performances.

During relaxed performances a quiet room will be available for those who need it. The quiet room is located in the south east corner just off the main lobby on the second floor.



LAND ACKNOWLEDGEMENT:

The land on which Public Energy works is in the traditional territory of the Michi Saagig and Chippewa Nations. Our immediate area, known as Nogojiwanong (Ojibwa for “place at the end of the rapids”), has been a meeting place and a place to tell stories for thousands of years. Public Energy acknowledges the Anishinaabeg for their care taking of these lands and waters and recognizes our responsibility to peaceably share and care for them. We are honoured to be working with Indigenous artists and providing a platform for their voices to be heard and respected.